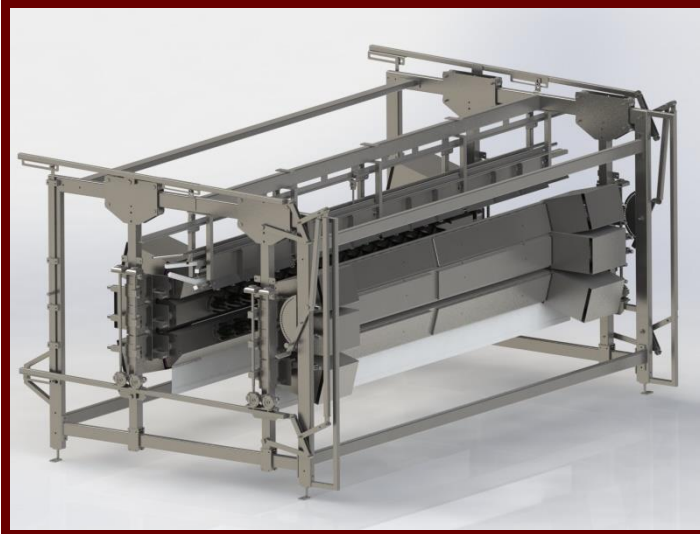


Product sheet - Plucking Machine "Beam" Style



Plucking Machine
"Beam" Style

The purpose of the machine is to remove the feathers of ducks and geese previously properly scalded. The plucking is accomplished by rotating plucking disks mounted on the beams, with the help of rubber fingers. GKG type plucking machines comprise a product family. The main structural groups within the family are identical from the aspect of design and operation. The difference within the subgroups is limited to the plucking length, and the location and number of the plucking beams.

Main dimensions

3,200 x 2,250 x 2,820 mm

Type

GKG 6 x 8-10-12-14-16

Accessories

The units of the plucking machine are driven by an asynchronous electric motor for each beam.

(2.2 kW - 400 V - 50 Hz)

The lower feather deflector tarp made from plastic is also an accessory of this machine, and its purpose is to prevent the feathers falling below from scattering.

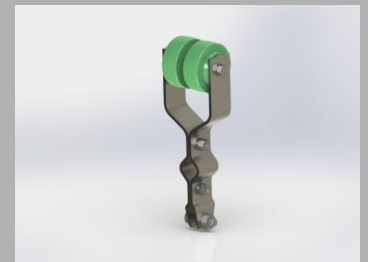
The plucking machine has a low maintenance demand, but the condition of the plucking rubbers must be checked daily and replaced as required.

Settings - Cleaning

The heights of the beams can be set separately during operation; the width of the machine can also be set with the threaded spindles located on either end. These are also used to open the machine for cleaning or rubber replacement.



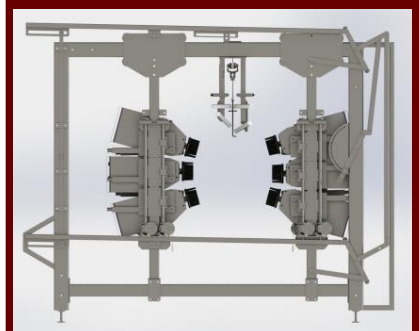
Hook - Goose, duck



Track cart



Plucking unit



SAMPO
FOOD PROCESSING TECHNOLOGY