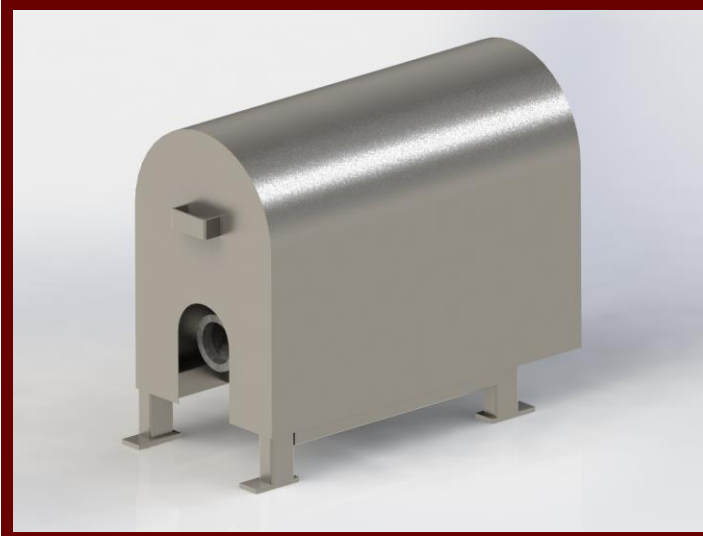
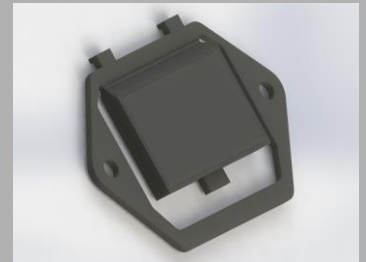


# Product sheet - Membrane pump



Membrane pump

One of the unique aspects of the membrane pumps we manufacture is the specially designed rubber-coated non-return valve. This valve makes our pump suitable to forward parts containing a large percentage of pieces and pulp in the gentlest manner (without crushing or breaking). The pump casing is made of aluminum, the valves and the membrane are made of food industry rubber, while the covering is stainless steel. The pulp is driven by an electric motor built together with a front-wheel drive. Both the inlet and outlet of the membrane pump are 3" female nipple screws.



Membrane



Inlet and outlet nipples



Cross-section

## Technical parameters

## Type

M300

Electrical capacity:	1.5 kW (400 V, 50 Hz)
Supplier performance:	3,000 – 8,000 l/hour (depending on rot.)
Installation size:	400 x 970 x 720 mm
Connections	
Inlet nipple	NA80 (C3")
Outlet nipple	NA80 (C3")

## Used materials

Compliance with the food industry and hygienic regulations was an important factor during design. Accordingly, mainly stainless steel, aluminum, and food industry rubber were used.



**SAMPO**  
FOOD PROCESSING TECHNOLOGY